

# SUBJECTIVE COGNITIVE DECLINE

## AMONG AFRICAN AMERICANS

Data from the 2015 Behavioral Risk Factor Surveillance System



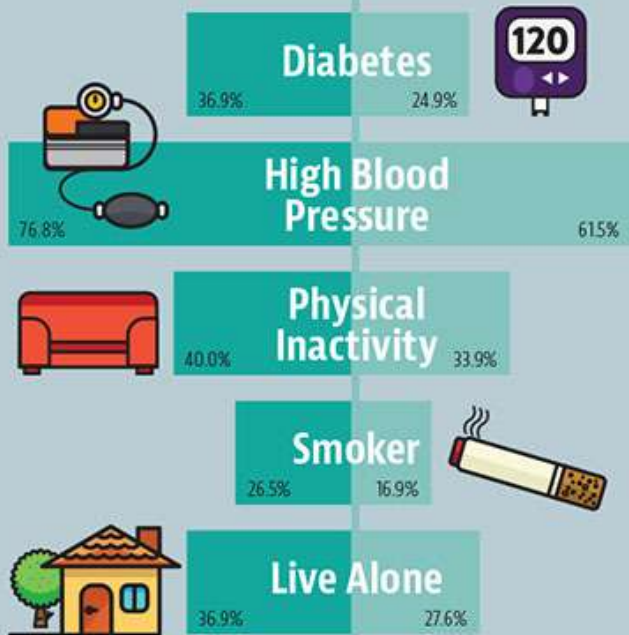
# 1 IN 7

AFRICAN AMERICANS AGED 45+ HAVE **SUBJECTIVE COGNITIVE DECLINE**

SCD is self-reported MEMORY PROBLEMS that have gotten worse over the past year.

African Americans with SCD often have other health challenges that may complicate care.

African Americans with SCD | African Americans without SCD



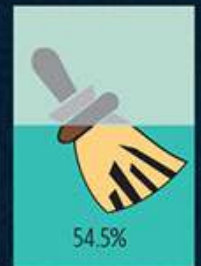
SCD IMPACTS EVERYDAY LIFE.



Could not work, volunteer, or socialize as usual



Needed help with household chores



Had to give up day-to-day activities

YET, LESS THAN HALF HAVE TALKED TO A DOCTOR ABOUT IT.



And, of those who have, ONE in THREE had trouble paying for medical care.

